

Disability and Access Guide for Birmingham Botanical Gardens

This access statement does not contain personal opinions as to our suitability for those with disabilities but aims to accurately describe the facilities and services that we offer our visitors.

Birmingham Botanical Gardens are an oasis of listed gardens situated one mile from the City Centre. Opened in 1832, these historic Gardens are an independent educational charity, offering a collection of 7000 plants and family friendly facilities. Four glasshouses filled with exotic plants take you from tropical rainforest to arid desert. Beyond, fifteen acres of landscaped gardens offer lawns and collections of roses, alpines, perennials, rare trees and shrubs. Attractions include adventure playgrounds, art gallery, tearoom, shop, a corporate entertainment venue and a collection of birds from all over the world. A programme of events offers flower shows, family fundays, theatre, music and art. The Gardens also provide courses, leisure learning, interpretation and family activities.

Birmingham Botanical Gardens are open daily and welcome all visitors. We aim to provide the best possible access to our Gardens and Glasshouses to ensure you have an enjoyable visit.

Pre-Arrival

For full details and maps of how to reach us please see the directions section of our website. Alternatively you can use Google maps: simply enter your postcode and ours which is B15 3TR to get directions.

- By Road or Bicycle - Birmingham Botanical Gardens is located 1 mile south from Birmingham City Centre. For Google maps and Sat Nav use postcode B153TR. Follow signs for Edgbaston then brown tourist signs to Botanical Gardens.
- By Bus - 10, 21, 22, 23, 24 and 29 stop in Westbourne Road (westbound) and Harborne Road (eastbound).
- By Rail - From Five Ways Station – 15 minutes walk/bus. Turn left on leaving the station, walk to the roundabout (8 mins.), take bus 22 from the stop in Calthorpe Road to Westbourne Road (4 mins.) and then alight near the Gardens (1 min.). From Birmingham New Street Station – Buses (as above) from Colmore Row or 20 minutes' taxi ride.

Car Parking

- We have a carpark with 120 spaces. The car park surface is tarmac that is able to support pushchairs and wheelchairs but can become slippery in icy weather.
- Parking is free subject to your registration of your vehicle on entry on the machines in Main Reception.
- Disabled parking bays are located on first row of car park by welcome sign and clearly marked out in blue. Blue badge must be displayed
- Three coach bays are clearly marked out on car park for coaches/mini buses.
- Bicycle racks are provided around the car park.



Car Park Entrance from Westbourne Road, Disabled Bays, Coach Bays, Bicycle Shelter

Arrival

- Entry into the site is via the car park situated on Westbourne Road. The Main Entrance to the Gardens is accessible from the car park, situated on the left of the glass arched building signed **Gardens' Entrance**. There is a small decline on the ramped access for wheelchair, mobility scooter and pushchair users or alternatively, five steps.



Main Entrance- external and internal, Reception Desk, Turnstile, Gate

Entrance and Main Reception

- Outer entrance doors are side opening double doors that can be held open for access into the outer concourse.
- Inner entrance doors to Main Reception are double doors that open automatically
- Our Main Reception Foyer area has a tiled floor which is on ground level and good natural light.
- Admissions are made via the Main Reception Sales Desk which is clearly signed. A staff member will be on hand to welcome and to direct visitors as required.
- Entry is via the turnstile or the side opening gate immediately adjacent to Reception. The gate is opened using a membership card on the swipe card reader located on the right hand side of the gate. Alternatively, non-members are welcome to ask to use the gate which will be opened by the Receptionist.
- A disabled toilet is situated at the right hand end of the Main Reception as you enter.



Entrance Doors, Main Reception Sales Desk, Turnstile and Gate, Toilets, Disabled Toilet

Mobility Scooters and Wheelchair Hire

We have mobility scooters and wheelchairs available to hire for visitors who find it hard to walk long distances but are otherwise able, have reasonable eyesight, reactions and hand grasp. We advise to book in advance during busy periods by calling our reception team on **0121 454 1860**. A small deposit applies.



- Scooters should be collected from the Receptionist on duty at the Main Reception desk.
- Our staff will give you simple instructions on using the scooter.
- Scooters cannot be used in Pavilion Tearoom, Toilets and must be parked safely outside.
- No scooters are allowed on lawned areas.
- Some external paths are not accessible by scooter or wheelchairs. A map of these paths is available from reception free of charge.
- Deposits will be refunded when scooters/wheelchairs returned safely.

Around the Gardens



The Gardens have an extensive network of paths which provide convenient access in most areas to all users including those on mobility scooters and in wheelchairs. Please note that many of these paths are sloping because the Gardens are situated on a site with a pronounced slope.

Main Lawn

Glasshouses

Birmingham Botanical Gardens have four Glasshouses: Tropical House, Subtropical House, Mediterranean House and Arid House. All are wheelchair and scooter accessible.

- All Glasshouses have level or ramped ground floor access paths which are tiled.
- You enter the Tropical House from the Main Reception foyer through automatically opening double sliding doors. This glasshouse has a tiled floor with a gentle slope leading to the Subtropical House.
- You enter the Subtropical House from the Tropical House through automatically opening double sliding doors. This glasshouse has an upper decked walkway with steps and ramps providing access to lower area and entrance to Garden Suite, Mediterranean House and Loudon Terrace.
- You enter the Mediterranean House using the entrance on the lower level at the foot of the ramp on the west (right hand) side of the Subtropical House.
- You enter the Barrel Arch from the entrance at the west end of the Mediterranean House. This area provides stepped access to the Loudon Terrace and level entrance to the Palm Lounge Bar through double side opening doors.

- You enter the Arid House through the entrance on the west side of the Barrel Arch. The Arid House has a paved pathway which provides access to the Terrace Suite through double side opening doors and ramped access to the Loudon Terrace through the side opening door at the west end of the Glasshouse.



Entrances to Tropical House, Subtropical House, Mediterranean House and Arid House

External areas

- The majority of paths in external areas have a tarmac surface.
- Areas served by gravel paths are the Rock Garden and Rhododendron Path.
- Areas served by bark or grass paths are the Woodland Walk, Growing Schools Garden, Butterfly House and Playground.
- Lawns and flower beds are generally sloping.

Pavilion Tearoom

- The Tearoom is accessed from the Loudon Terrace by a ramped access to the Pavilion Terrace which is situated adjacent to the Subtropical House entrance.
- The Pavilion Terrace provides level access to the Tearoom through side opening double doors.
- The Tearoom has self service food displays and a service counter accessible to all users.
- Scooters are not permitted in the Tearoom and should be parked safely outside when users are visiting these facilities.
- Toilets are available in the Tearoom but these are not adapted for use by wheelchair users.



Subtropical House Exit to Loudon Terrace, Ramp to Pavilion Terrace, Pavilion Tearoom entrance, Pavilion Lavatory

Lawn Aviary

- The Lawn Aviary is accessed from the path adjacent to the Sensory Garden which provides level path access to the building or from the Rose Garden which provides stepped and level access from several entrance ways.

- The Lawn Aviary interior is accessed by side opening doors and has a level tiled floor.



Lawn Aviary from Rose Garden, Sloping path access, Concourse Entrance North and South

Butterfly House

- The Butterfly House is accessed via the Growing Schools Garden which provides gently sloping gravelled path access to the building during its opening during the summer months.
- The Butterfly House interior is accessed by side opening doors and has a level paved walkway.



Butterfly House external, internal, all entrances

Banqueting Suites

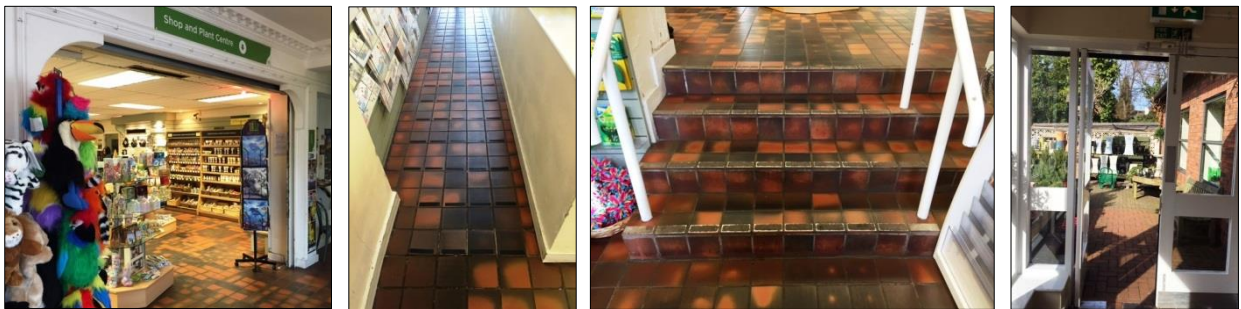
- Birmingham Botanical Gardens have three Banqueting Suites. All Suites are wheelchair accessible.
- The Garden Suite is entered from the Subtropical House on decked and tiled pathways. A ramped path leading to side opening double doors provides access into the Suite from the west side of the glasshouse. An entrance on the north side of the glasshouse with side opening double doors provides access to the raised balcony area in the Garden Suite. There is stepped access to the stage and balcony internally in the Garden Suite.
- The Terrace Suite is accessed via the Arid House by a slabbed pathway and side opening double doors. On entering, this suite has a slight raised balcony area with ramps providing access to dance floor, bar and toilet facilities.
- The Loudon Suite is situated adjacent to the Pavilion Tearoom. The entrance through two side opening double doors on the Pavilion Terrace is wheelchair and scooter accessible.



Entrances to Garden, Terrace and Loudon Suites

Shop

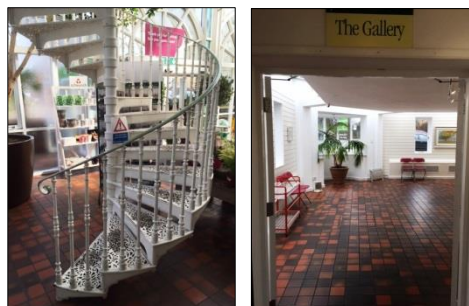
- Our Shop is located adjacent to the Main Entrance to the Gardens.
- Access to the shop is possible without entering the Gardens using the entrance on the right of the Main Reception area. Access is also possible on exit from the Gardens via the turnstile and gate within the pay zone in Main Reception. The exit gate is opened using the push button located to the left of the gate.
- The shop has two levels. On the upper level is a tiled floor which is wheelchair accessible with a tiled ramp providing access to the lower level area, also with a tiled level floor.
- The lower level provides access to our Plant Sales area which is paved and level.



Shop entrance, ramped access to lower floor, stepped access, plant sales ramp

Education Areas

- Our Education Classrooms are on the first floor and are accessed via the spiral staircase at the north end of our Main Entrance foyer.
- You enter the Main Classroom through a single side opening door.
- You enter the second classroom through a single side opening door and three steps lead up to the teaching space.
- There is no disabled access to rooms on the first floor.
- The Gallery doubles as a third classroom and is accessed via double side opening doors
- Baby Change facilities are wall mounted in the entrance to our disability friendly toilet in the Main Entrance foyer and in the ladies toilet on the Loudon Terrace.
- Additional toilets are located outside at the western end of the Loudon Terrace. These are accessed by level paths. The Ladies contains a disability friendly toilet with wall mounted baby change.



Spiral staircase, Gallery entrance

Toilet and Baby Changing Facilities

- Our customer toilets are located on the right hand side of our Main Reception area.
- Our disability friendly toilet is located at ground floor level adjacent to our customer lavatories. It is accessible by wheelchair and motor scooter.

- Baby Change facilities are wall mounted in the entrance to our disability friendly toilet in the Main Entrance foyer and in the ladies toilet on the Loudon Terrace.
- Additional toilets are located outside at the western end of the Loudon Terrace. These are accessed by level paths. The Ladies contains a disability friendly toilet with wall mounted baby change.
- Toilets in our Pavilion Tearoom provide level access but they are not accessible by wheelchair or motor scooter.
- All toilet doors open inward.
- All toilets have hand dryers, pushdown taps and mirrors.



Entrance to lavatories: Entrance Concourse, Pavilion Tearoom, Loudon Terrace

Additional Information

- All of our staff receive regular training in First Aid and Emergency Evacuation procedures.
- Our fire alarm is a continuous ringing of a bell. Our Receptionist will make an announcement over the public address system if an evacuation due to a fire alarm is required. We follow evacuation procedures – should you require it, someone will assist you with evacuation from the Gardens or to a safe fire assembly point within our site.

Contact Information

- Birmingham Botanical Gardens, Westbourne Road, Edgbaston, Birmingham B15 3TR
- Telephone: 0121 454 1860
- Website: <http://www.birminghambotanicalgardens.org.uk>
- www.facebook.com/Birmingham-Botanical-Gardens
- Twitter: @BhamBotanicalGd
- Opening times: Summer (BST): 10 - 7pm; Winter: 10 to 7pm
- Days of the week – Every day
- Christmas Day and Boxing Day 25, 26 December - closed
- Local Public Transport:
- Bus 08712 002 233 www.networkwestmidlands.co.uk
- Train: 0121 200 2787 (centro)
- Taxis: www.toataxis.co.uk

If there is anything we can do to help with information before your visit, please call us on 0121 454 1860 (10am – 5pm) or email admin@birminghambotanicalgardens.org.uk.